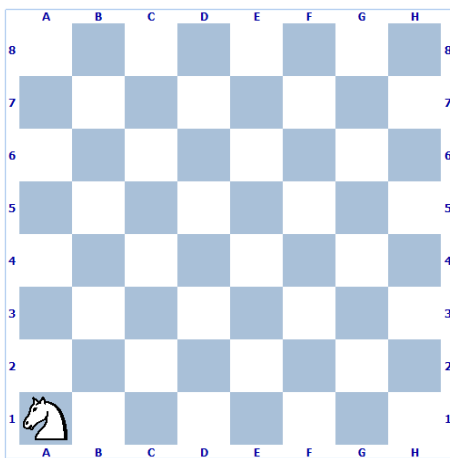


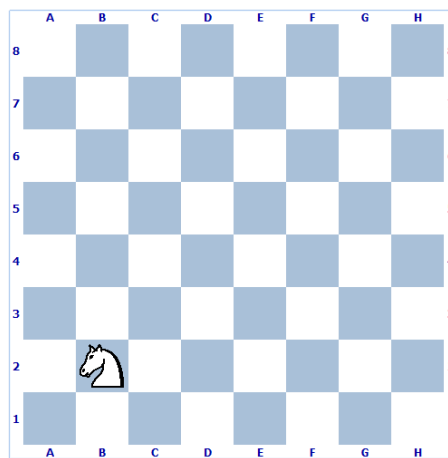
UNIDAD 9: EL CABALLO

1.- ¿A cuántas casillas y a cuáles puede mover el caballo?

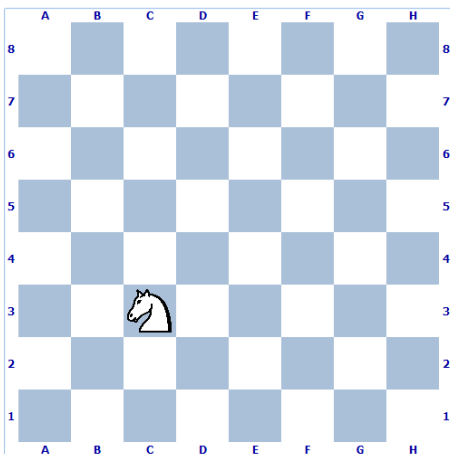
Ejercicio 1



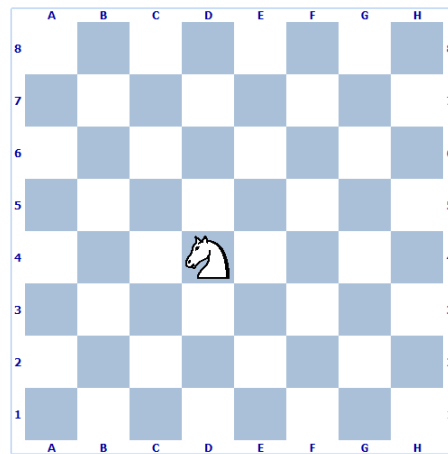
Ejercicio 2



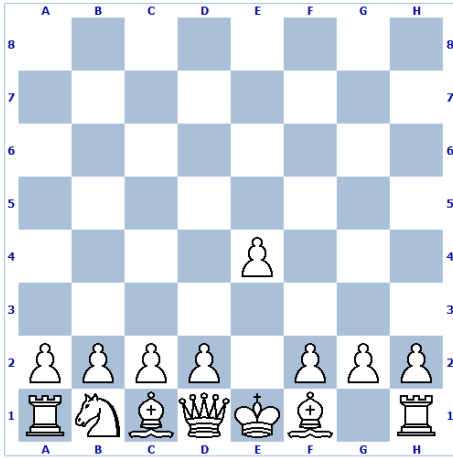
Ejercicio 3



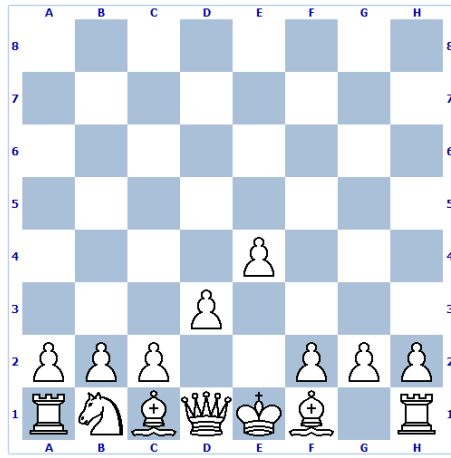
Ejercicio 4



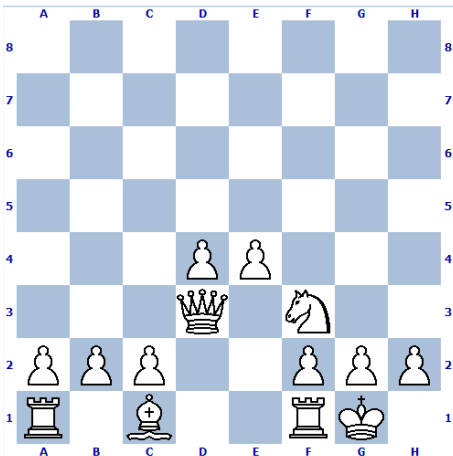
Ejercicio 5



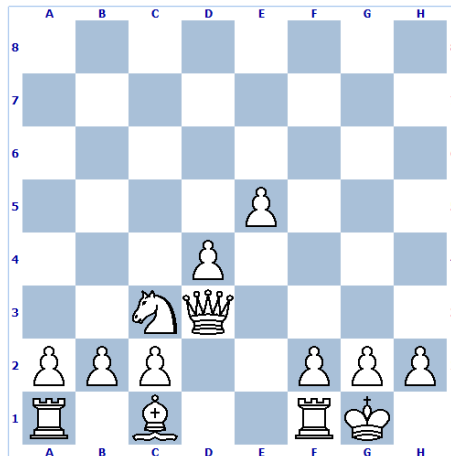
Ejercicio 6



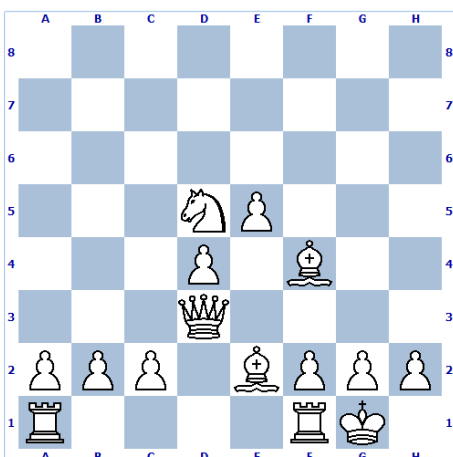
Ejercicio 7



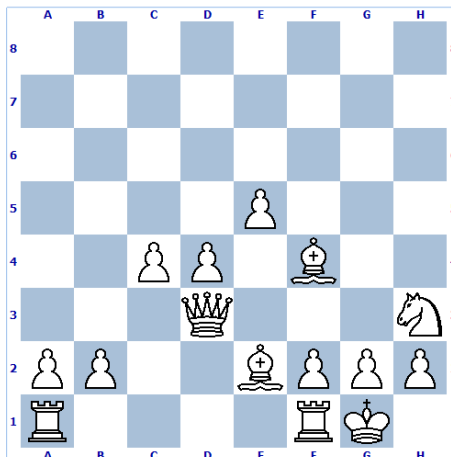
Ejercicio 8



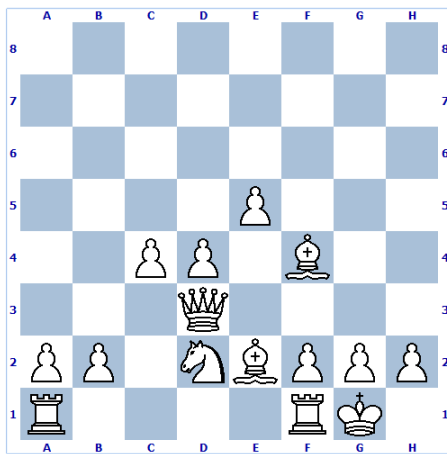
Ejercicio 9



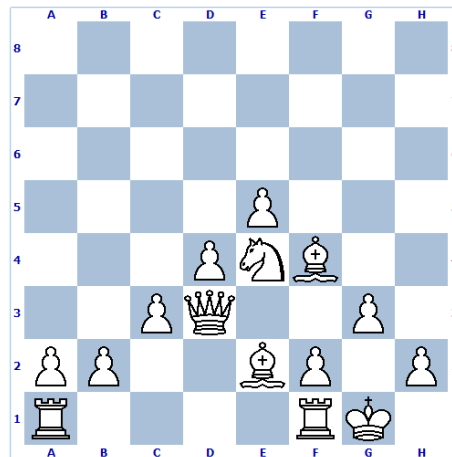
Ejercicio 10



Ejercicio 11

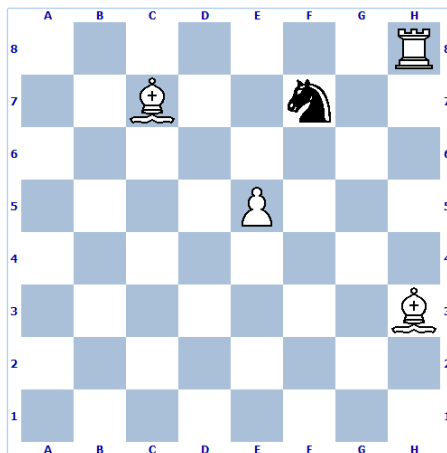


Ejercicio 12

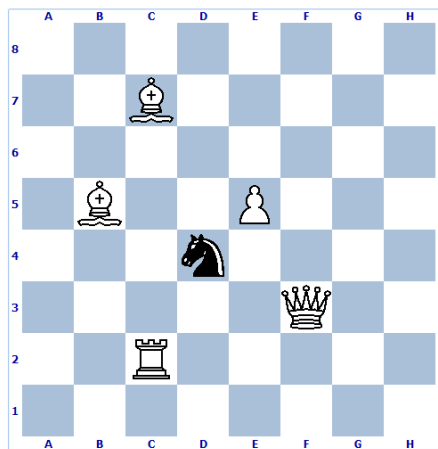


2.- ¿Qué piezas puede capturar el caballo? Las demás piezas no pueden moverse.

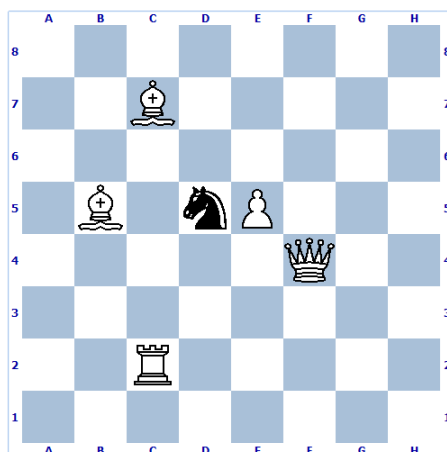
Ejercicio 1



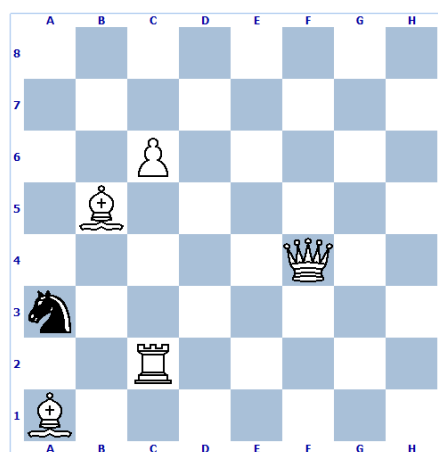
Ejercicio 2



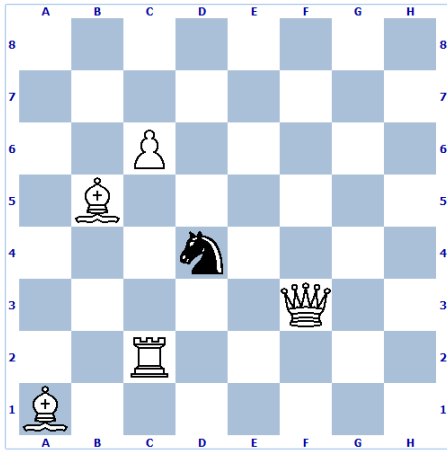
Ejercicio 3



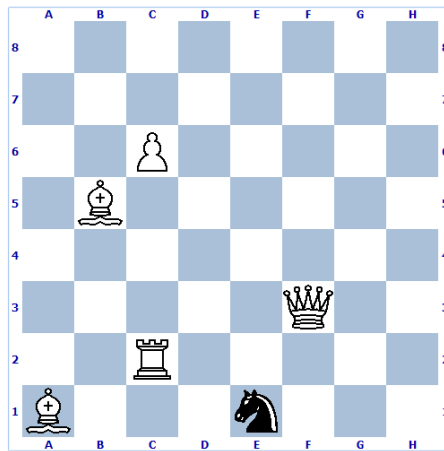
Ejercicio 4



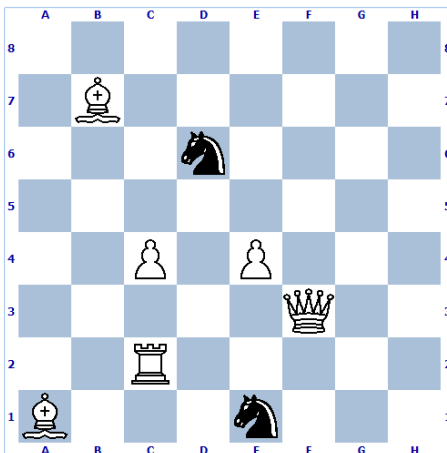
Ejercicio 5



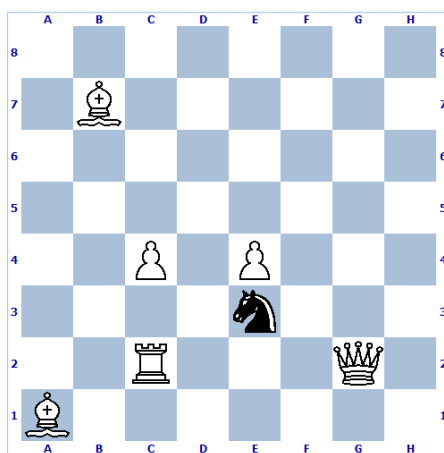
Ejercicio 6



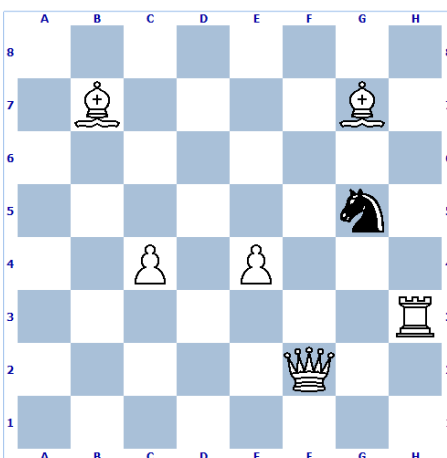
Ejercicio 7



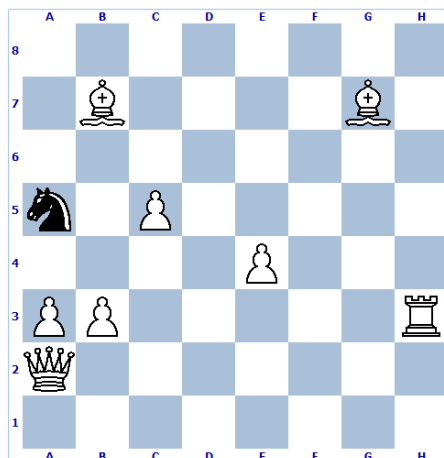
Ejercicio 8



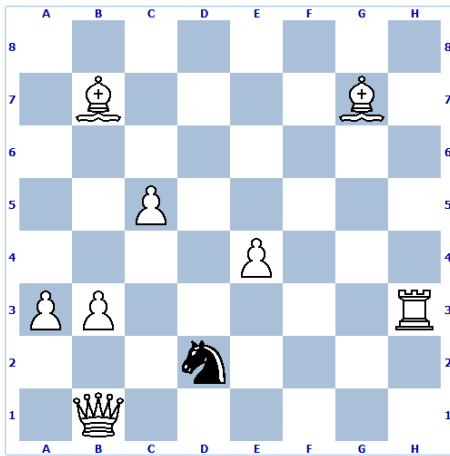
Ejercicio 9



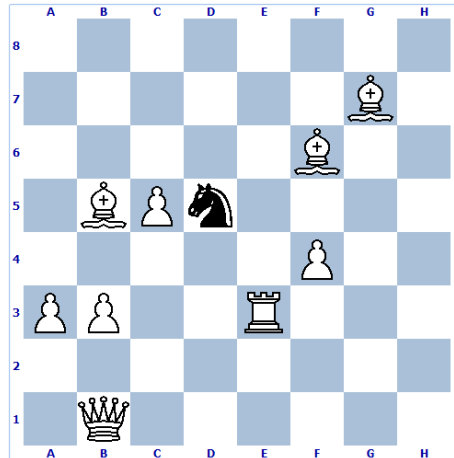
Ejercicio 10



Ejercicio 11

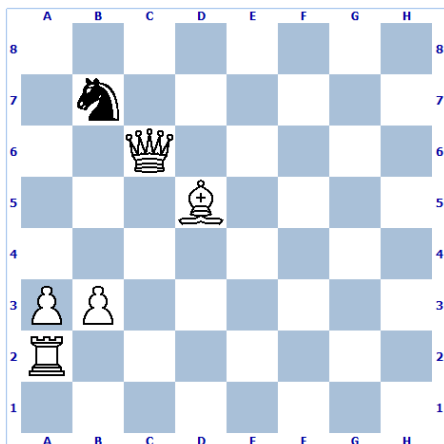


Ejercicio 12

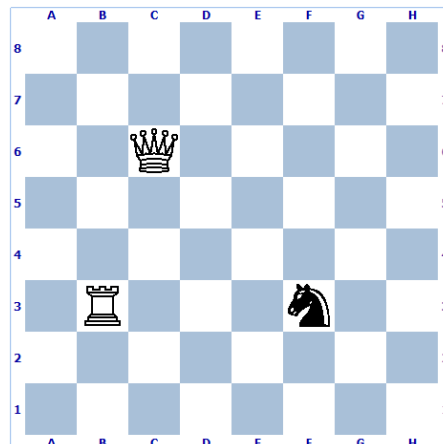


3.- ¿A dónde moverías el caballo para amenazar a varias piezas a la vez?

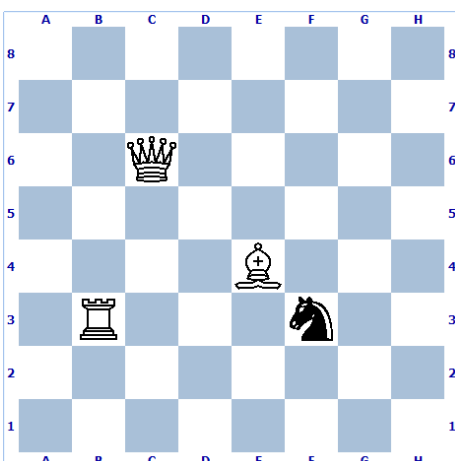
Ejercicio 1



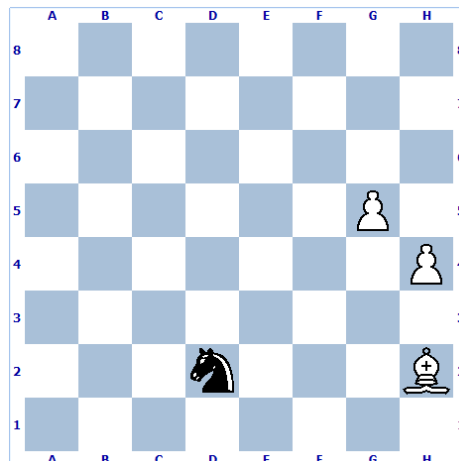
Ejercicio 2



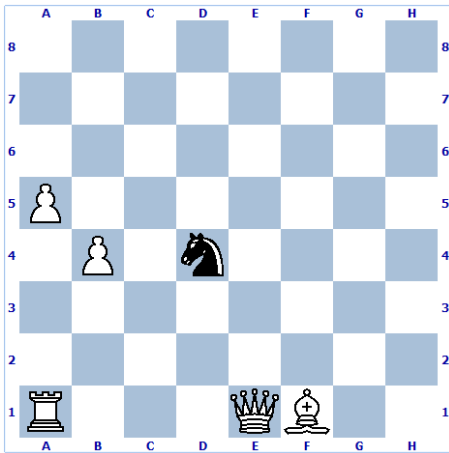
Ejercicio 3



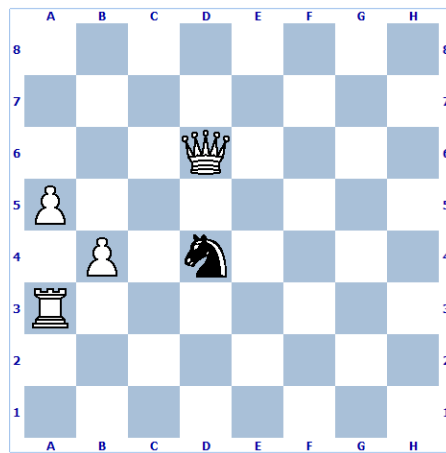
Ejercicio 4



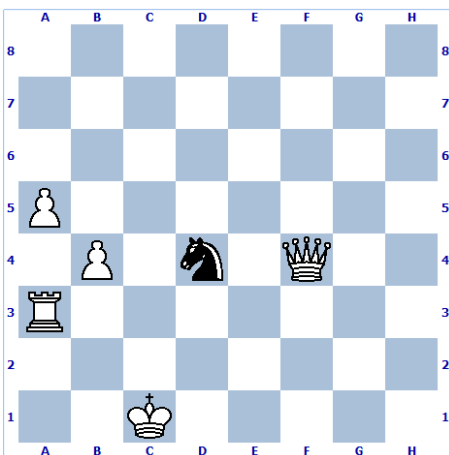
Ejercicio 5



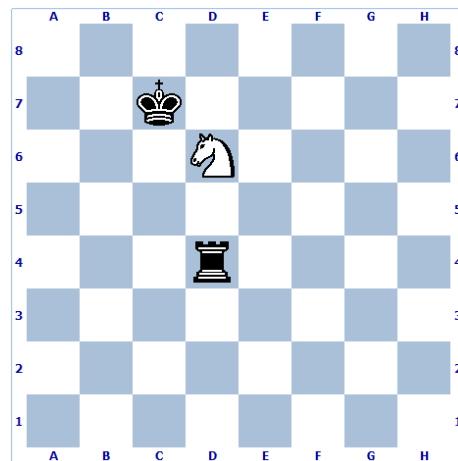
Ejercicio 6



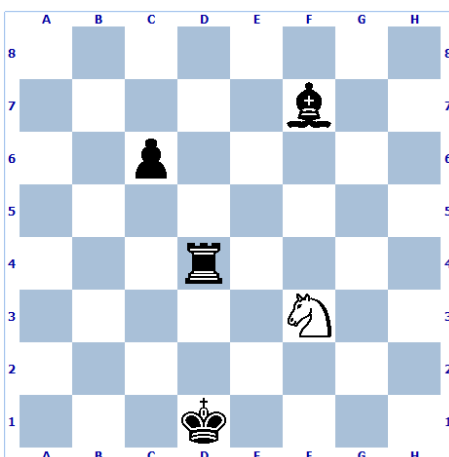
Ejercicio 7



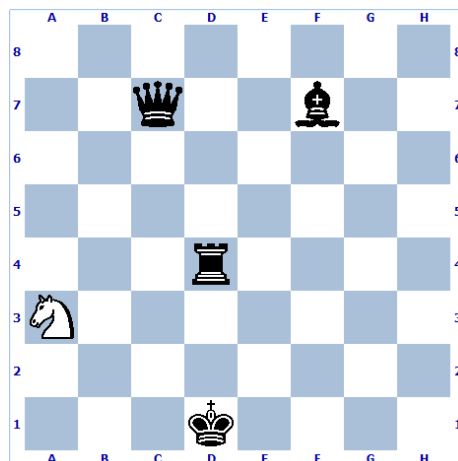
Ejercicio 8



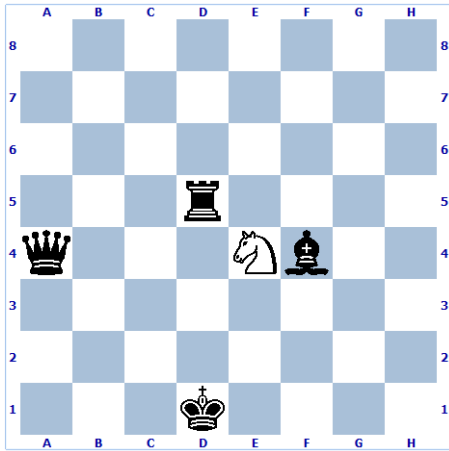
Ejercicio 9



Ejercicio 10



Ejercicio 11



Ejercicio 12

