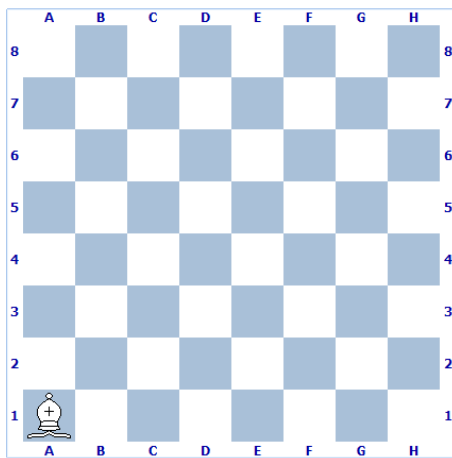


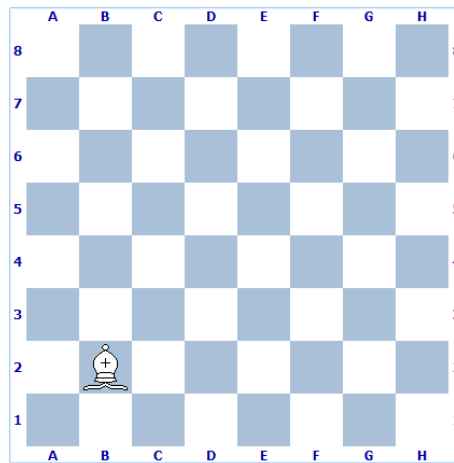
UNIDAD 06: EL ALFIL

1.- ¿A dónde puede mover el alfil?

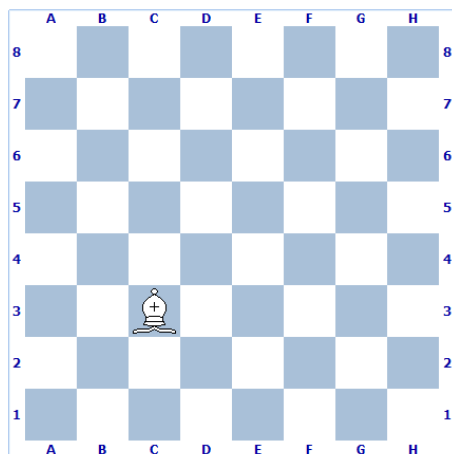
Ejercicio 1



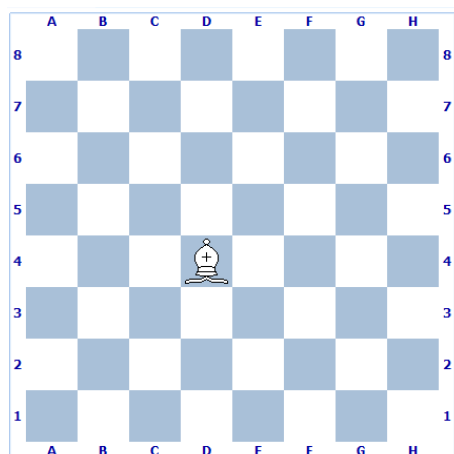
Ejercicio 2



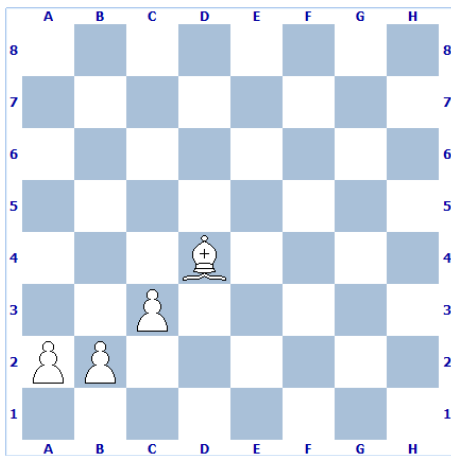
Ejercicio 3



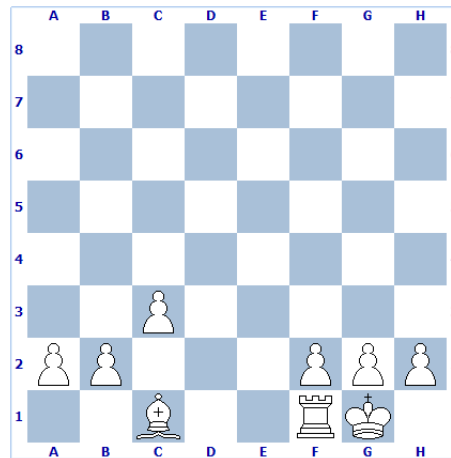
Ejercicio 4



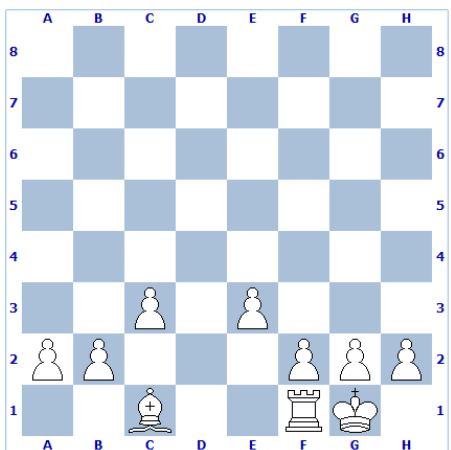
Ejercicio 5



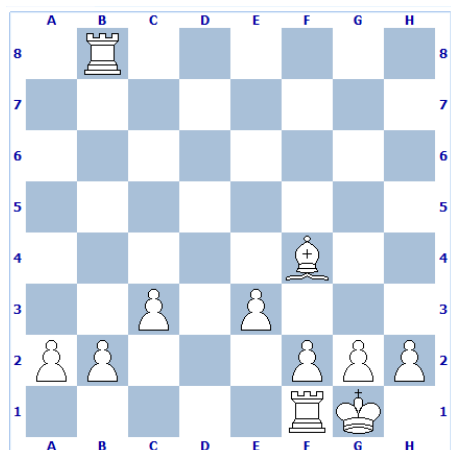
Ejercicio 6



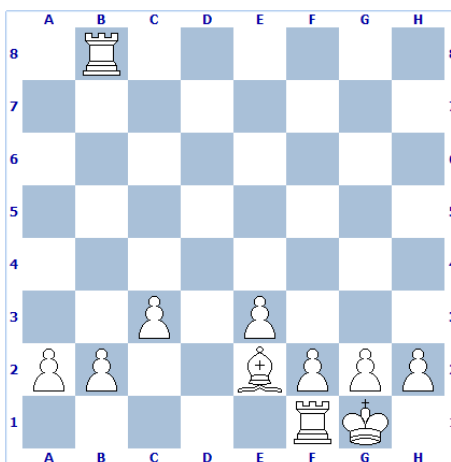
Ejercicio 7



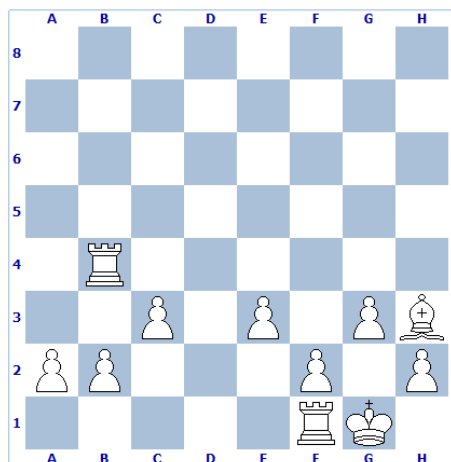
Ejercicio 8



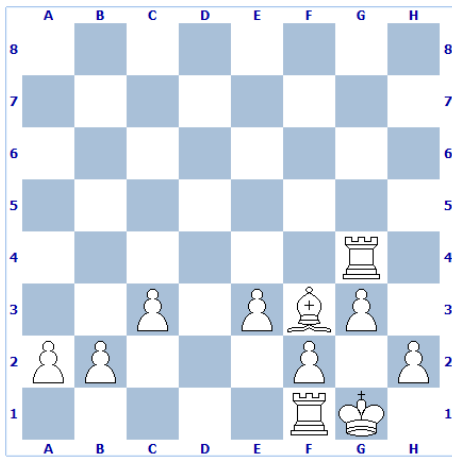
Ejercicio 9



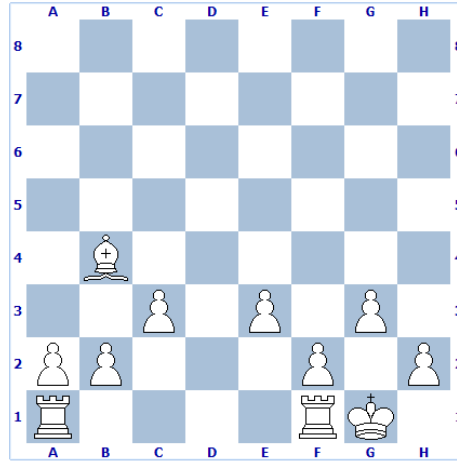
Ejercicio 10



Ejercicio 11

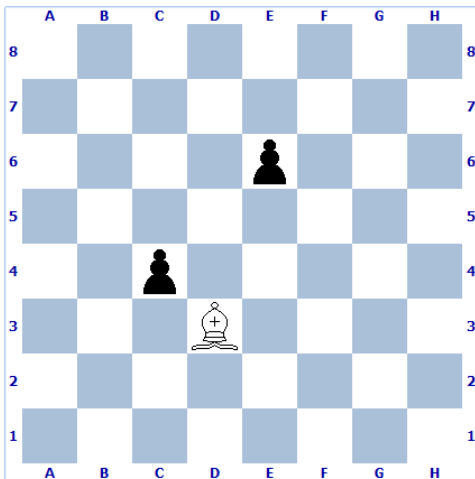


Ejercicio 12

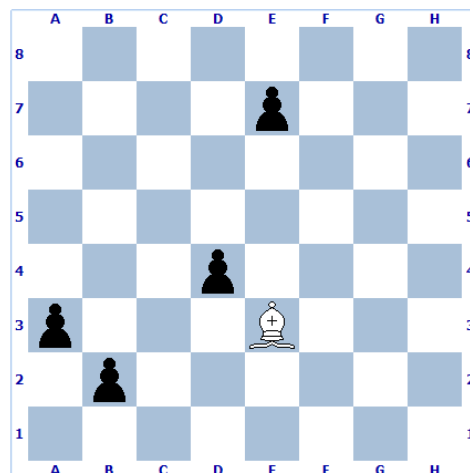


2.- ¿Qué camino debe seguir el alfil para capturar a todos los peones?
 Los peones no se mueven

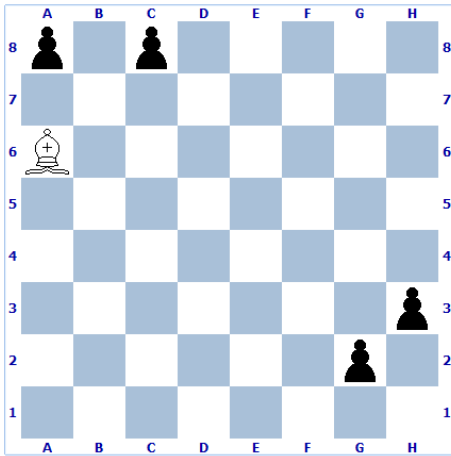
Ejercicio 1



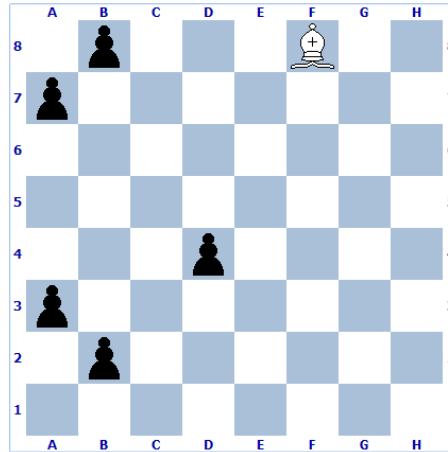
Ejercicio 2



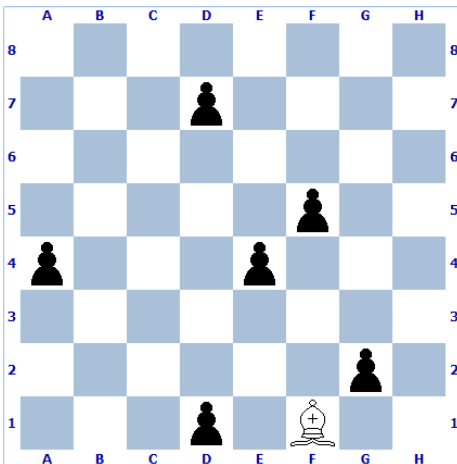
Ejercicio 3



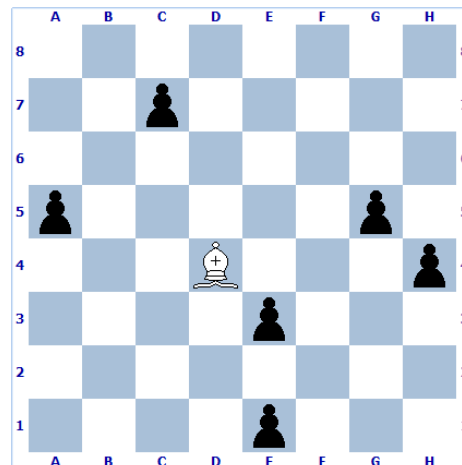
Ejercicio 4



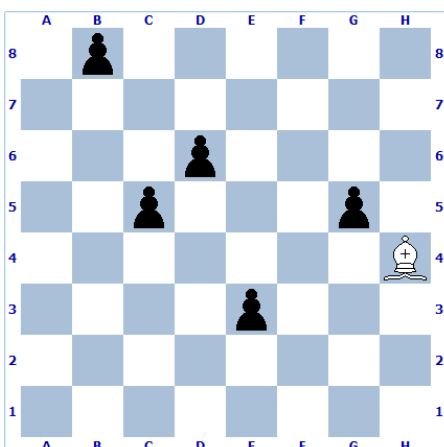
Ejercicio 5



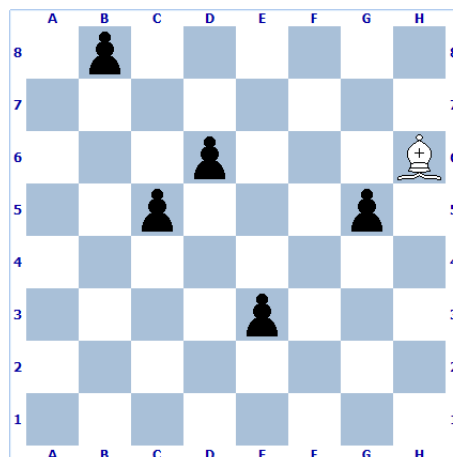
Ejercicio 6



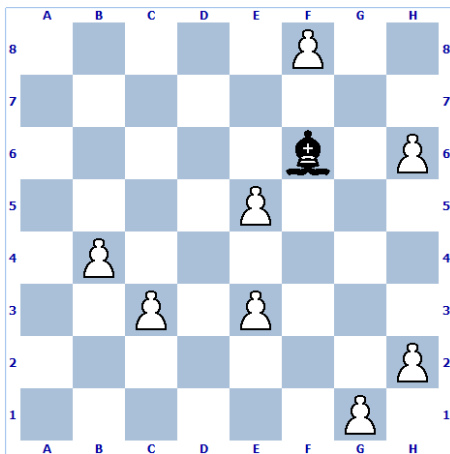
Ejercicio 7



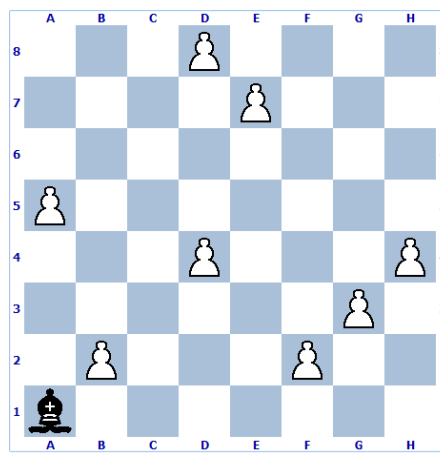
Ejercicio 8



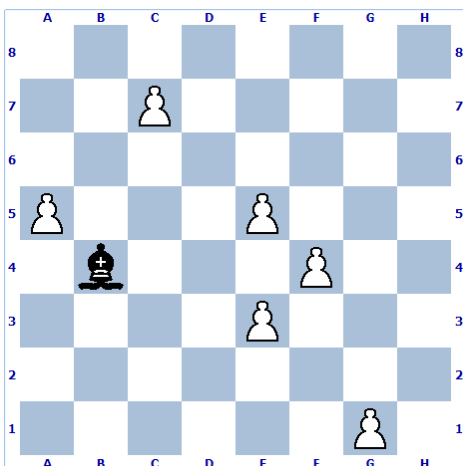
Ejercicio 9



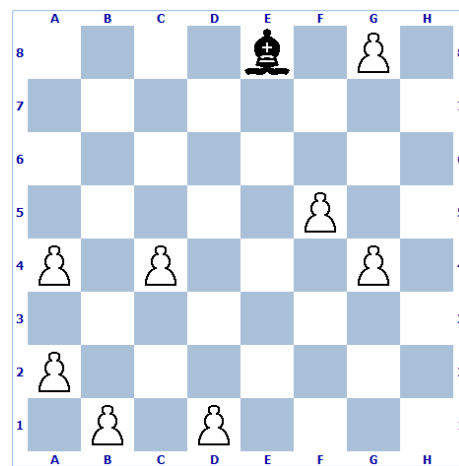
Ejercicio 10



Ejercicio 11

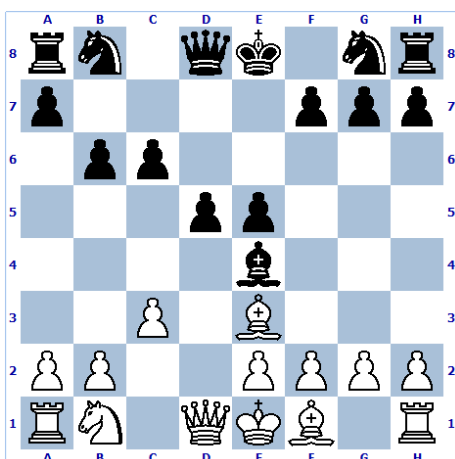


Ejercicio 12

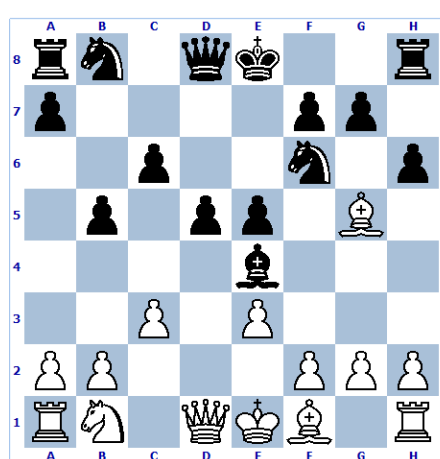


3.- ¿A qué pizas pueden capturar los alfiles?

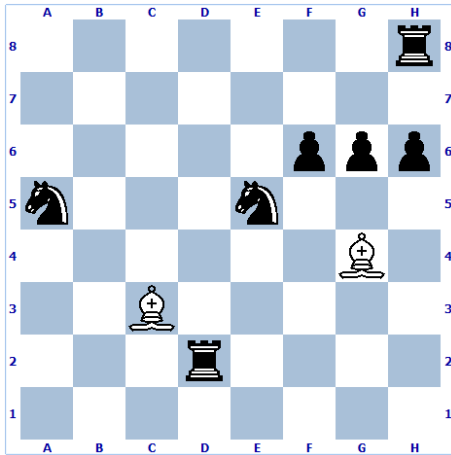
Ejercicio 1



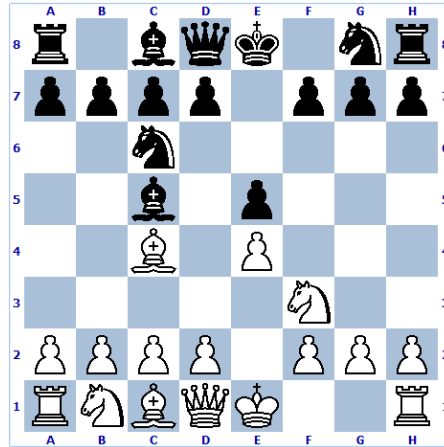
Ejercicio 2



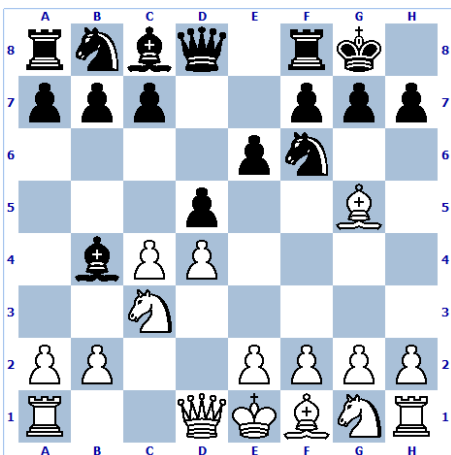
Ejercicio 3



Ejercicio 4



Ejercicio 5



Ejercicio 6

