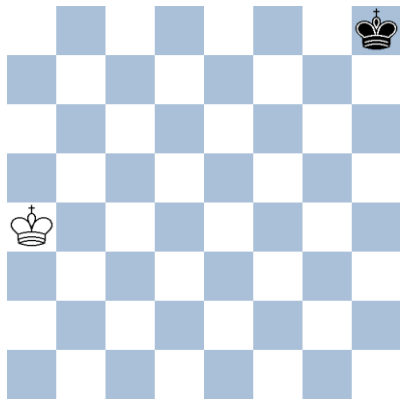


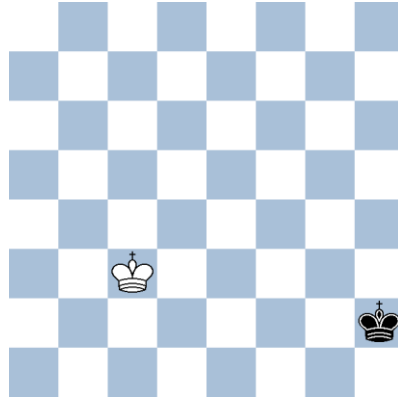
UNIDAD 03: EL REY

1.- ¿A cuántas casillas puede mover el rey negro? ¿Y el blanco?

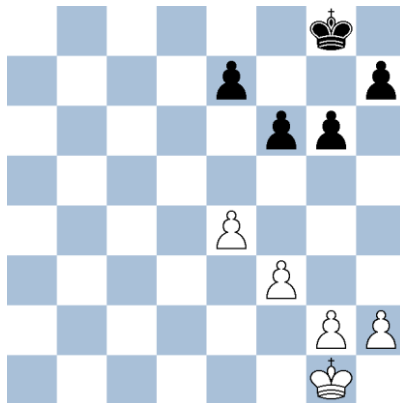
Ejercicio 1



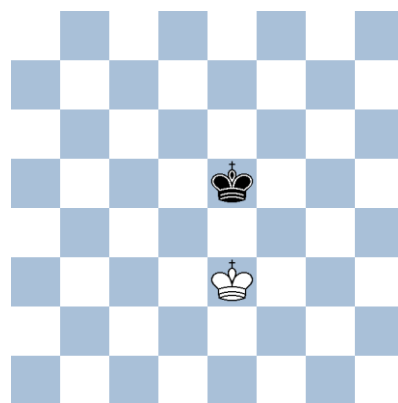
Ejercicio 2



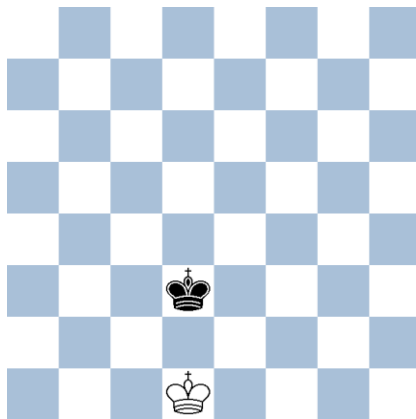
Ejercicio 3



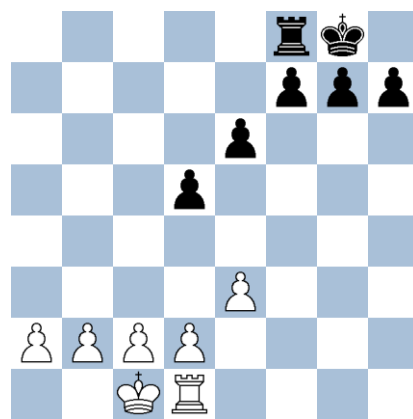
Ejercicio 4



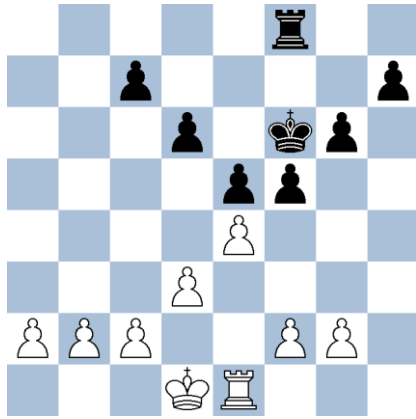
Ejercicio 5



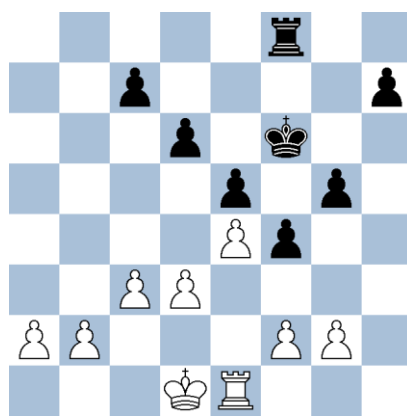
Ejercicio 6



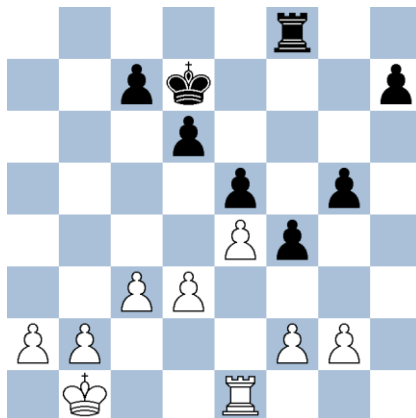
### Ejercicio 7



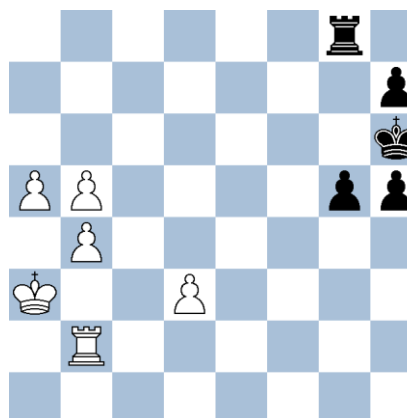
### Ejercicio 8



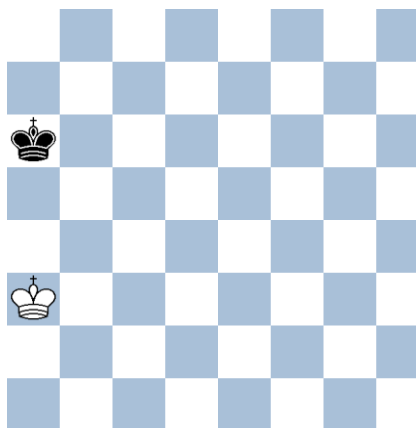
### Ejercicio 9



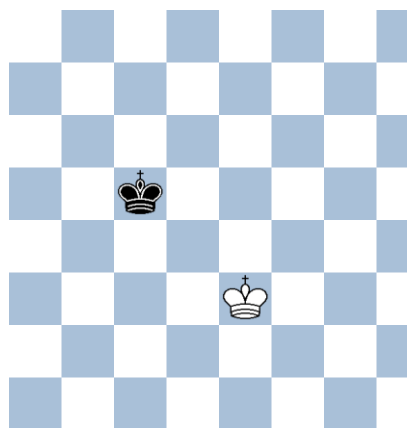
### Ejercicio 10



### Ejercicio 11

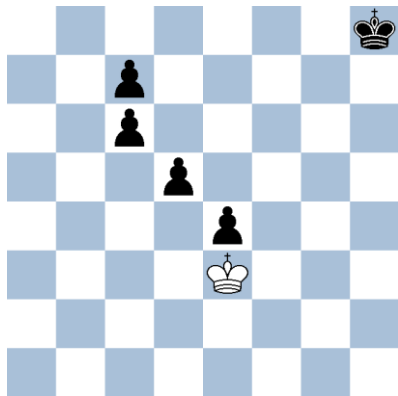


### Ejercicio 12

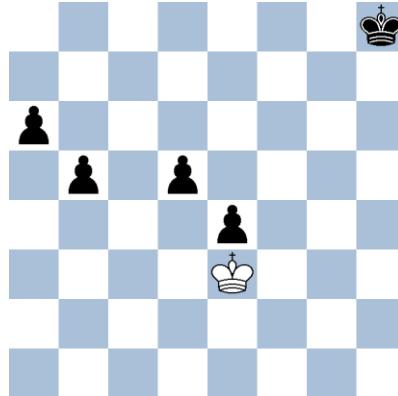


2.- ¿En cuántos movimientos el rey blanco puede capturar todas las piezas negras (que no se pueden mover) menos el rey?

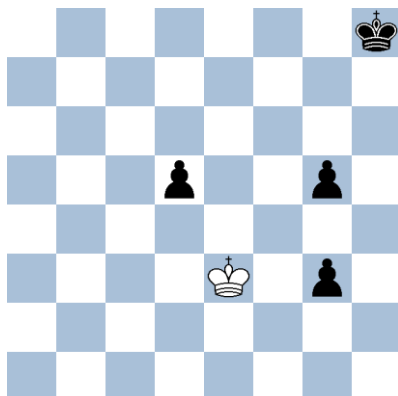
Ejercicio 13



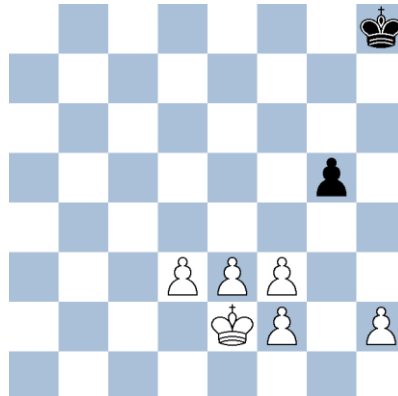
Ejercicio 14



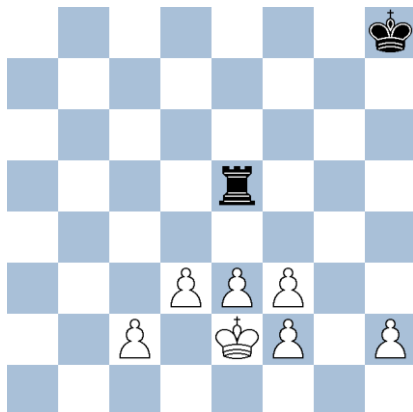
Ejercicio 15



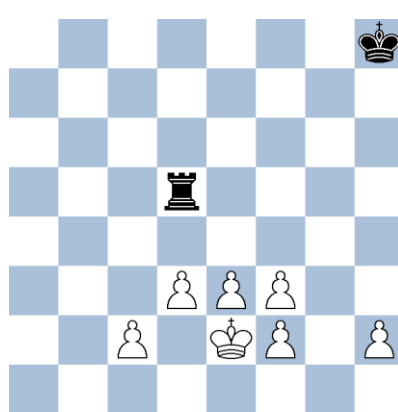
Ejercicio 16



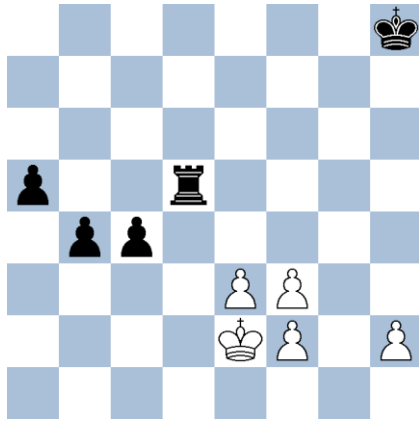
Ejercicio 17



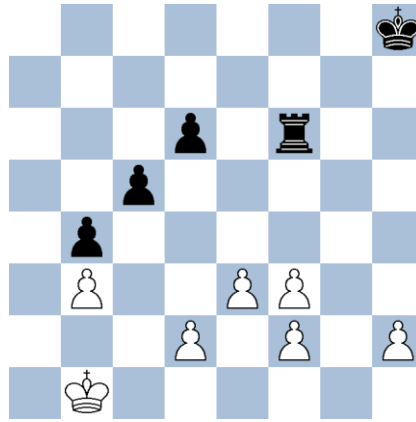
Ejercicio 18



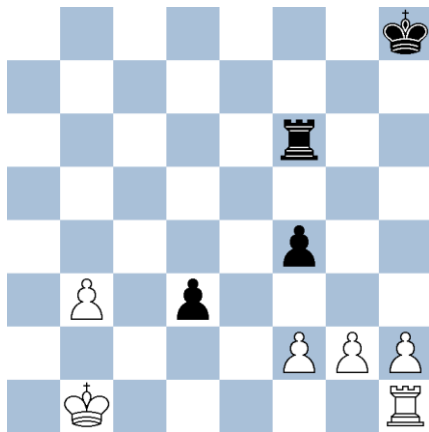
**Ejercicio 19**



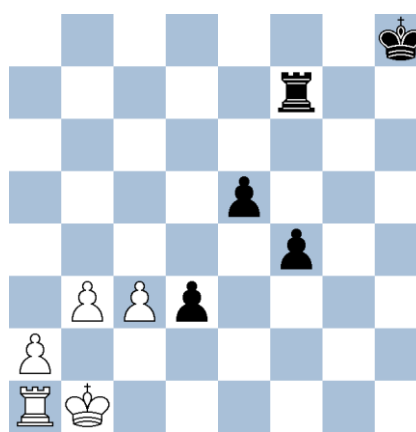
**Ejercicio 20**



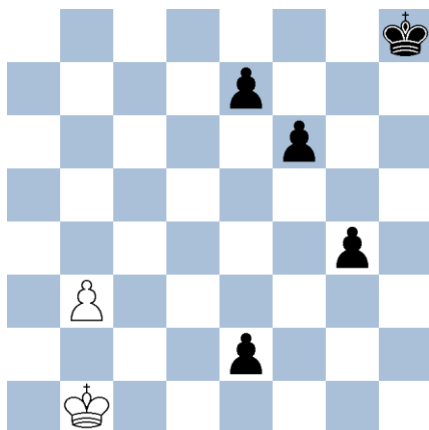
**Ejercicio 21**



**Ejercicio 22**



**Ejercicio 23**



**Ejercicio 24**

